

Calero County Park Trails Master Plan

Parks and Recreation Commission

November 2, 2011



Trails Plan Purpose

- Explore opportunities for multi-use trails
- Consider access to newly-acquired park areas
- Explore alignments for regional trails
- Develop a sustainable trails plan
- Coordinate with on-going County planning efforts and partner agencies



Process to date

- Community input through two web-based surveys and two open houses
- Field investigations
- Completion of Program Development Report
- Review by PRC
- Coordination with partner agencies
- Alternatives development and evaluation
- September 15 community meeting
- Follow-up project team meeting and alternative refinement



Focus of Tonight's Meeting

- Review of preliminary trail alignments
- Review the range of use alternatives considered
- Review of a draft preferred alternative
- Discussion of Sept. 15 community meeting comments
- Progress report since community meeting
- Review of next steps / outstanding issues



Community Input Summary (Program Development Phase)

Everyone wants

- Variety in trail experience and ability level
- Regional trail connections
- Protection of sensitive resources
- Long-term success



Community Input Summary

Equestrians want

- A safe place to ride without always considering potential conflicts with bicyclists



Community Input Summary

Bicyclists want

- Access to trails
- The ability to connect between parks



Community Input Summary

Runners want

- Access to trails
- Connections between parks for long-distance runs



Community Input Summary

Hikers want

- Access to trails



Community Input Summary

Dog owners want

- Access to trails



Agency Input Summary

County Parks wants

- Compatibility with natural resource management
- Completion of multi-use regional trail segments
- Collaboration with partner agencies
- Consistency with adjacent open space uses
- Ability to sensibly enforce solutions
- Long-term sustainability
- Flexibility
- Long-term vision
- Continued advancement of multi-use trails best practices



Agency Input Summary

Partner agencies want

- Consistency with plans and policies
- Minimal conflicts with operations
- Consistency with adjacent open space uses



Trails Plan Alternatives Approach

- Develop a base trail alignment plan common to all alternatives
- Consider a range of trail use alternatives
- Evaluate alternatives based on established criteria
- Select a preferred alternative



Trail Alignment Plan

Trail Alignment Plan based on

- Documented physical data (topography, soil type, vegetation, etc.)
- Existing trail assessments / new trail potential
- Regional trail corridors
- Natural resource management objectives
- Site investigation
- Community input
- Existing and planned adjacent uses
- Partner agency input
- Consistency with on-going plans

Trail Alignment Plan

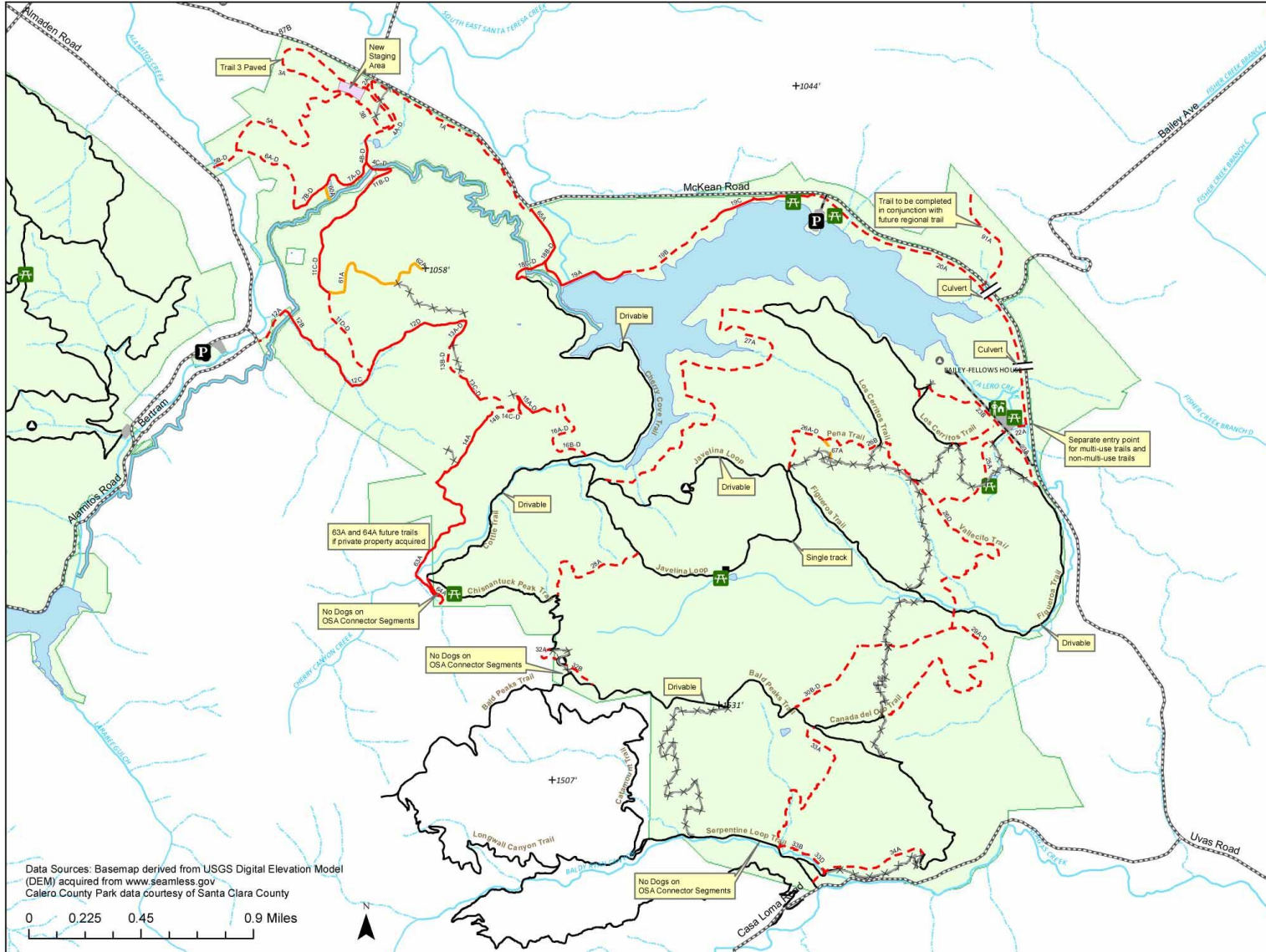
Calero County Park
Trails Master Plan

Draft Trail Alignment Base Map



- New Trail
- New Trail on (E) Road
- New Service Road
- Service Access Only
- Existing Trails
- x x x x Trails to be removed

Note: Drivable trails are indicated with a label or a "-D" after the segment number.

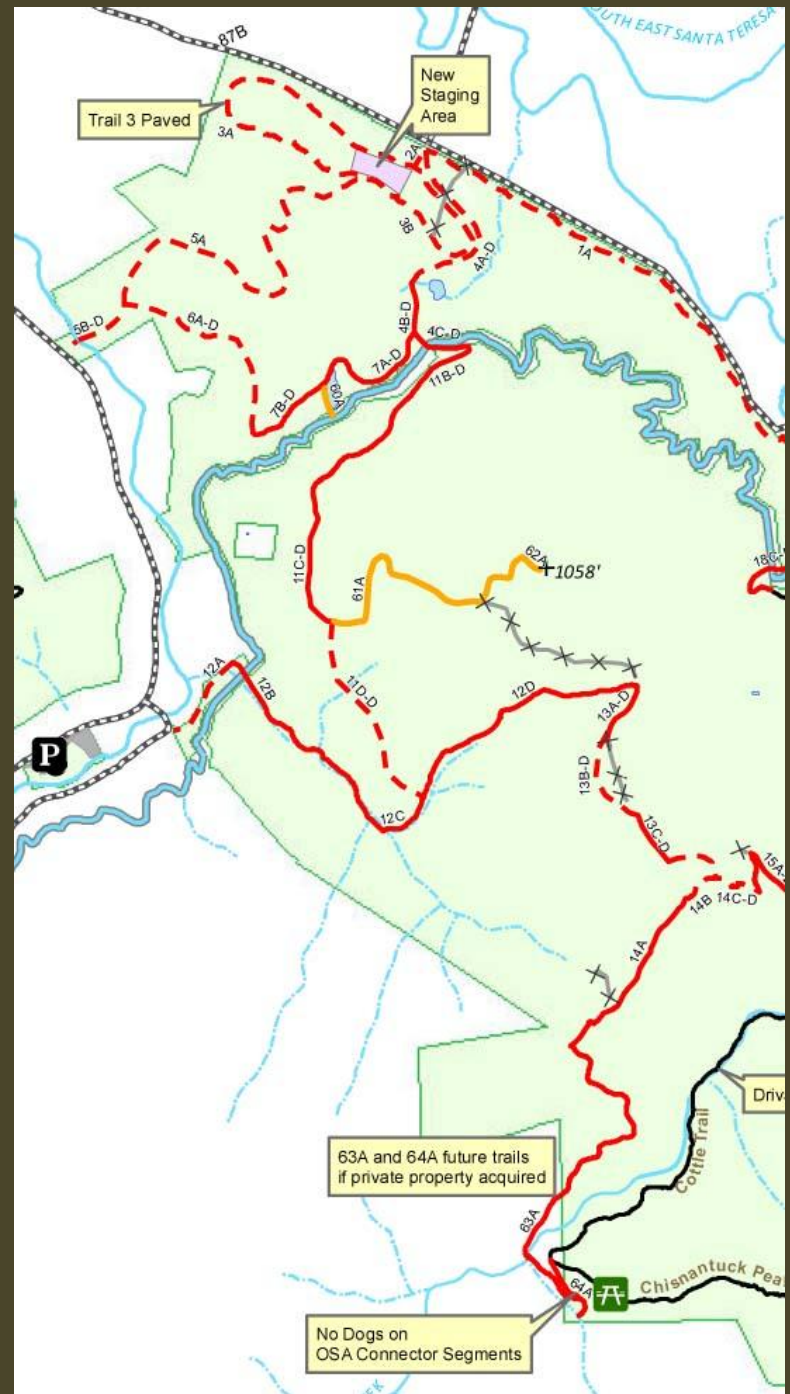


Data Sources: Basemap derived from USGS Digital Elevation Model (DEM) acquired from www.seamless.gov
Calero County Park data courtesy of Santa Clara County



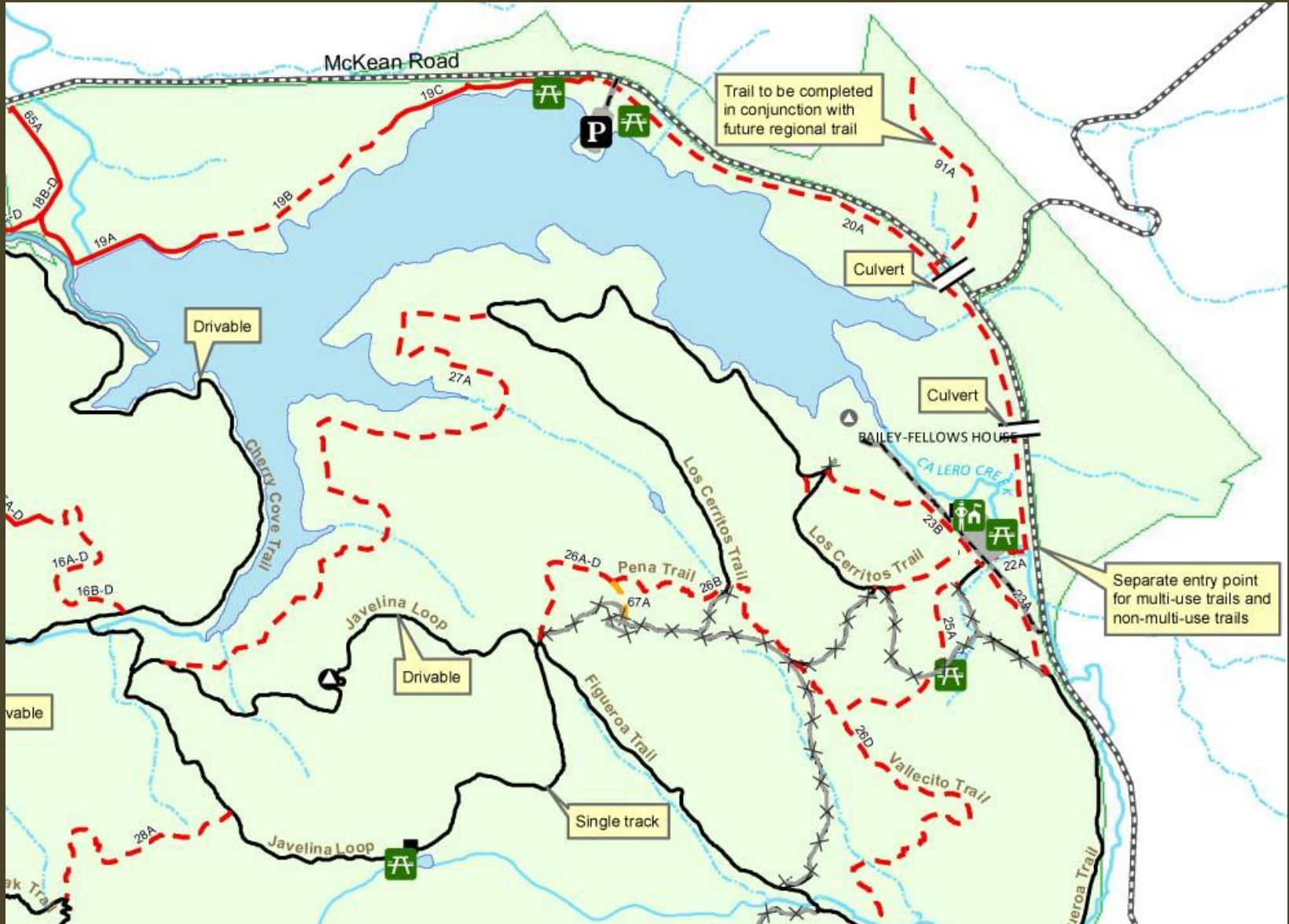
Trail Alignment Plan

Rancho San Vicente Area



Trail Alignment Plan

Calero Lake/McKean Road Area



Existing Culvert

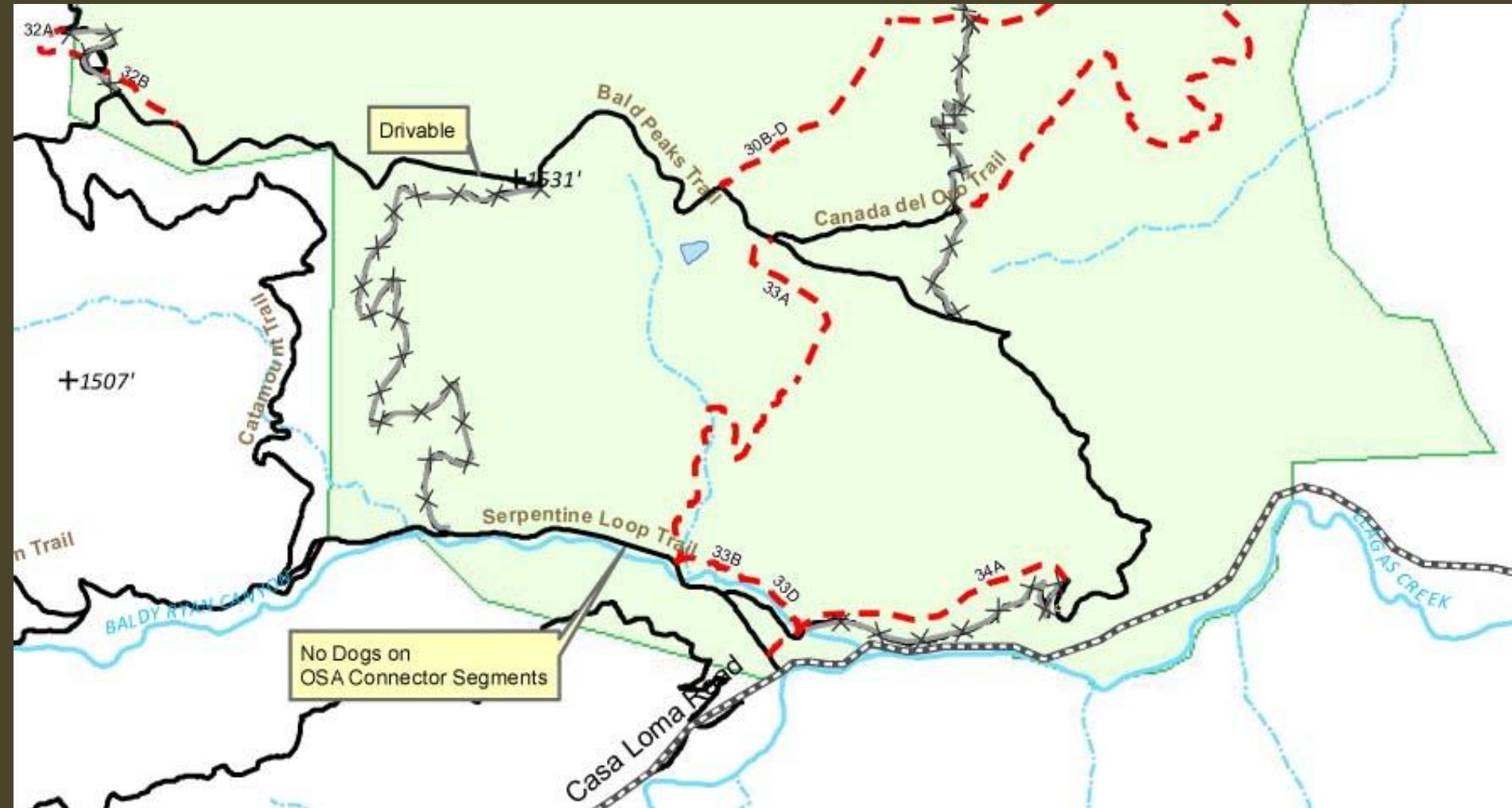
Standards for undercrossings

- Equestrians: 10-foot vertical clearance minimum, 12-foot preferred
- Bicycles: 8-foot vertical clearance minimum, 10-foot preferred
- Width: 8-foot minimum, 12-foot preferred

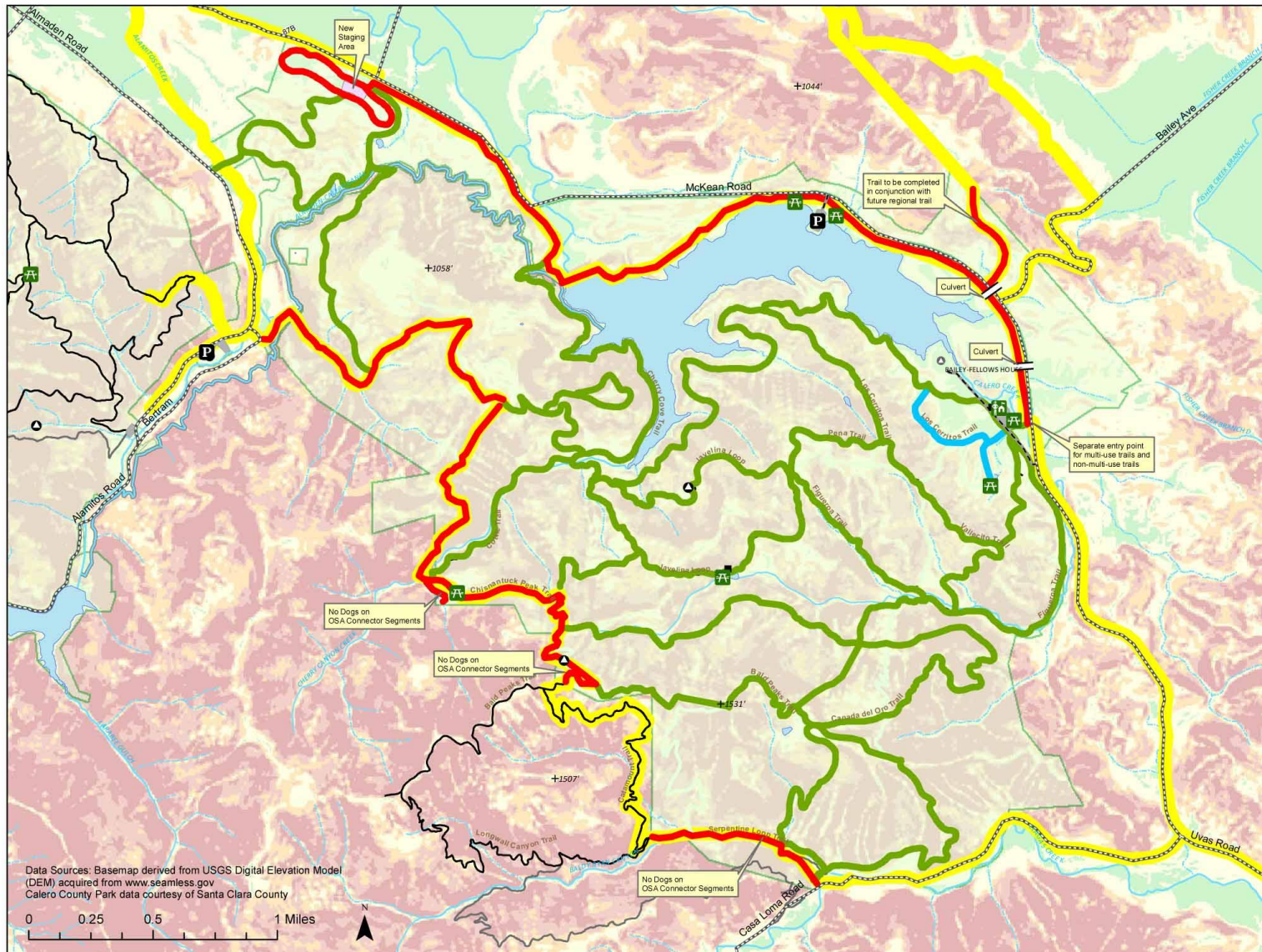


Trail Alignment Plan

Casa Loma Road Area



Trail Use Plan Alternative 1



Calero County Park Trails Master Plan User Alternative 1



- Regional Connections
- Hiking & Dogs on Leash
- Hiking & Equestrian
- Hiking, Equestrian, Dogs on Leash, Bikes

Data Sources: Basemap derived from USGS Digital Elevation Model (DEM) acquired from www.seamless.gov
Calero County Park data courtesy of Santa Clara County

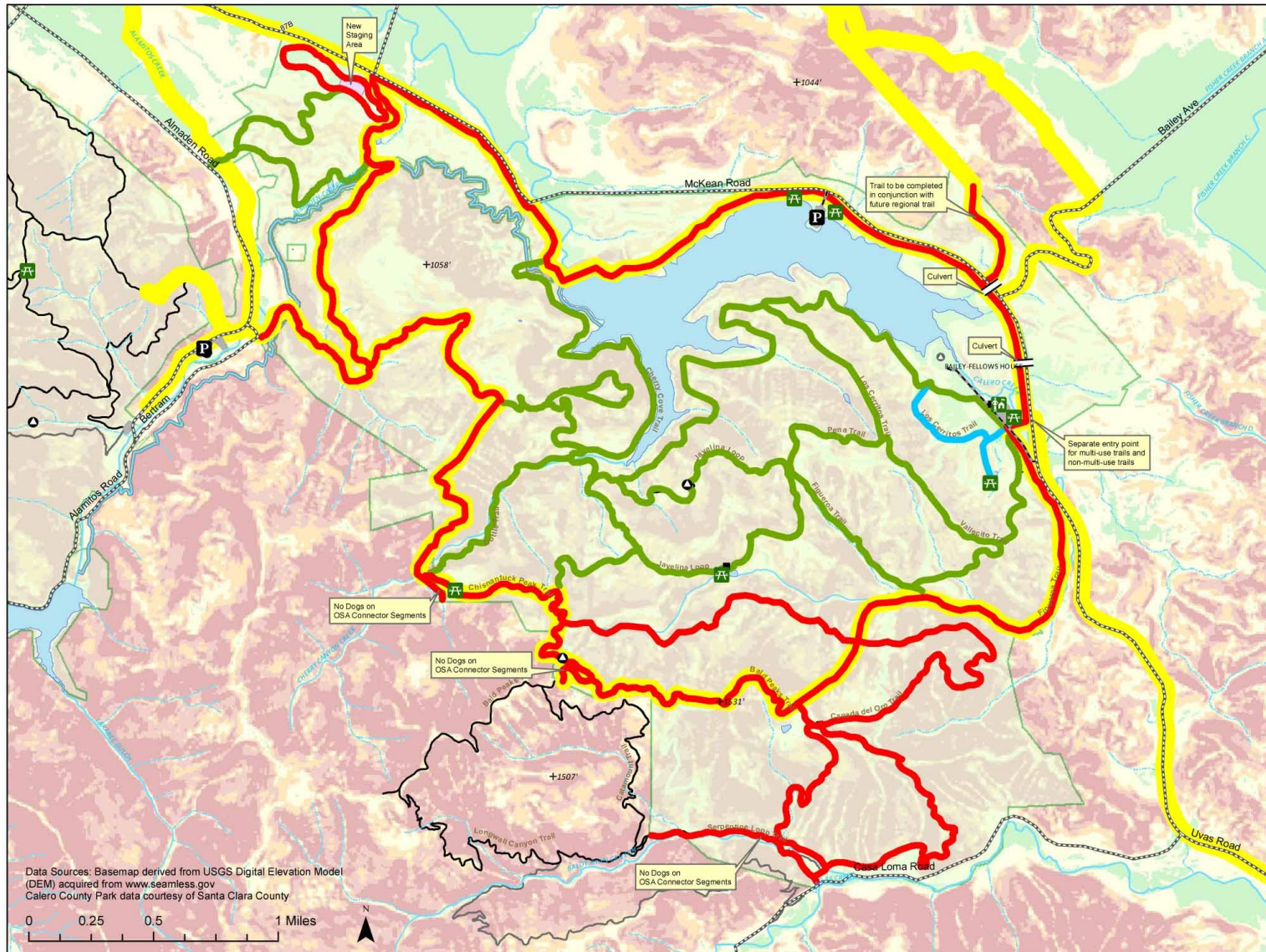
bellinger foster steinmetz 2011
Draft September 14, 2011

Trail Use Plan Alternative 2

Calero County Park Trails Master Plan User Alternative 2



- Regional Connections
- Hiking & Dogs on Leash
- Hiking & Equestrian
- Hiking, Equestrian, Dogs on Leash, Bikes



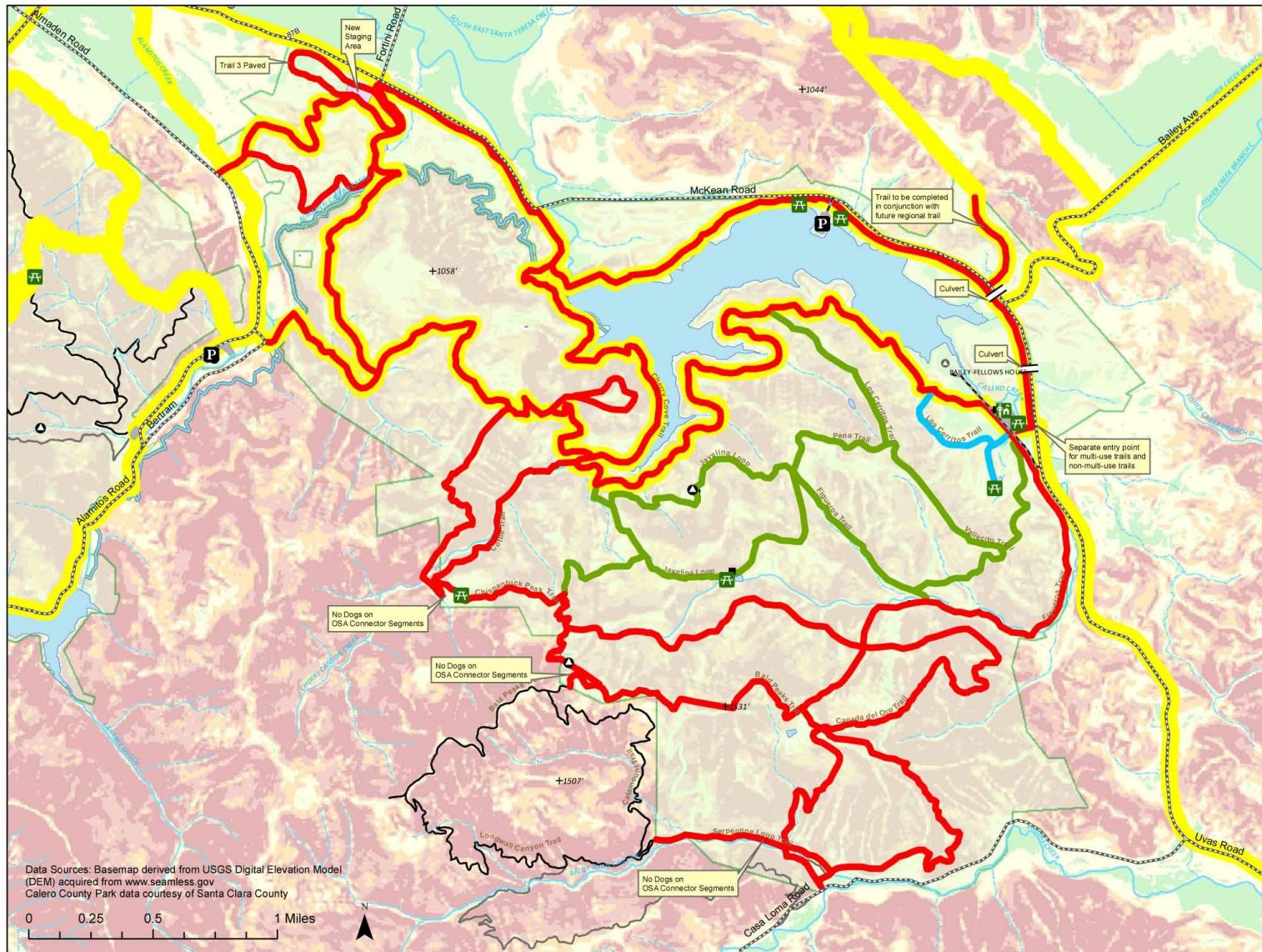
Data Sources: Basemap derived from USGS Digital Elevation Model (DEM) acquired from www.seamless.gov
Calero County Park data courtesy of Santa Clara County

Trail Use Plan Alternative 3

Calero County Park Trails Master Plan User Alternative 3



- Regional Connections
- Hiking & Dogs on Leash
- Hiking & Equestrian
- Hiking, Equestrian, Dogs on Leash, Bikes



Data Sources: Basemap derived from USGS Digital Elevation Model (DEM) acquired from www.seamless.gov
Calero County Park data courtesy of Santa Clara County

Trail Mileage by Use

	Alternative 1	Alternative 2	Alternative 3
Hiking & Dogs	1.2	1.2	1.2
Hiking & Equestrian	24.1	15.9	6.6
Hiking, Equestrian, Dogs on leash, Bikes	10.2	18.4	27.7
Total	35.5	35.5	35.5

Evaluation Criteria

Evaluation criteria were developed based on:

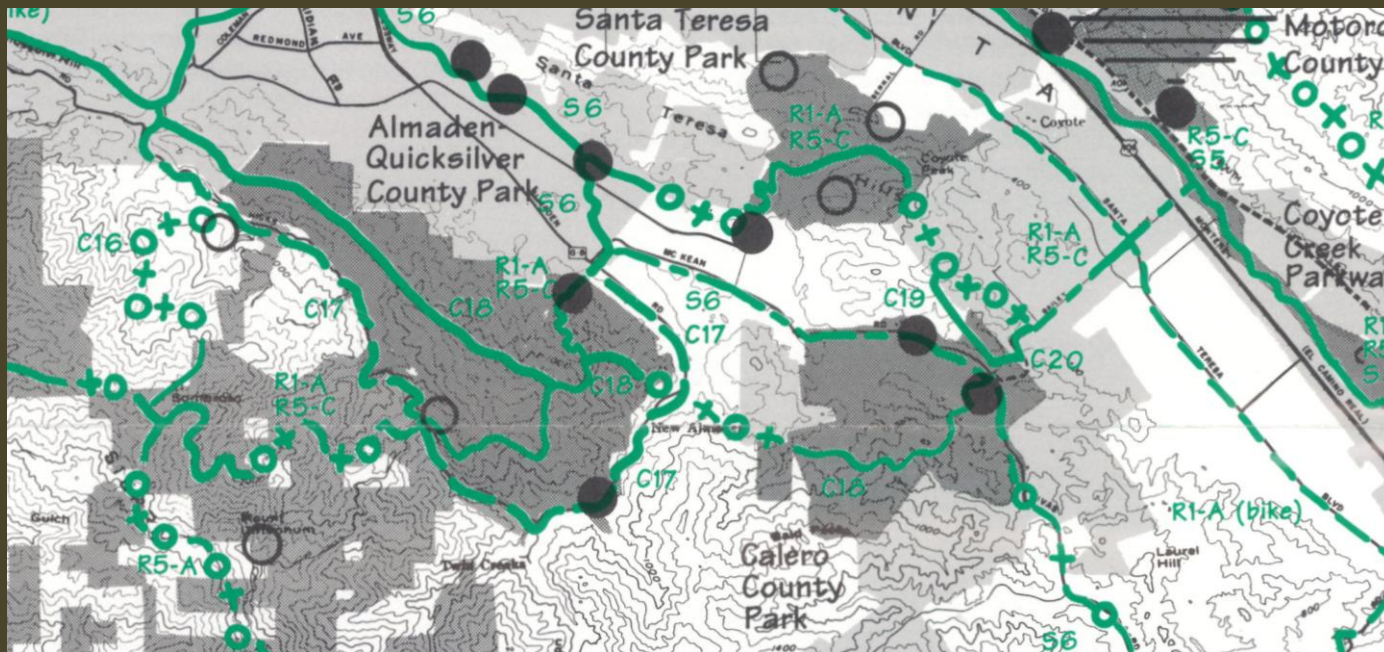
- The Program Development Report
- On-line questionnaire responses
- Comments received at the open houses
- Partner agency input
- County Parks trail and resource management experience



Evaluation Criteria

Consistency with Plans and Policies

- County General Plan
- Strategic Plan
- Countywide Trails Master Plan
- Draft Santa Clara Valley Habitat Plan



Evaluation Criteria

Consistency with Partner Agency needs and objectives

- Common uses with adjacent public open space
- Minimize conflicts with agency operations



Evaluation Criteria

Appropriate features and facilities

- Adequate staging and related facilities
- Emergency access and safety considerations
- Variety of trail user experience



Evaluation Criteria

Operational Sustainability

- Long-term operations considerations
- Consistency with Natural Resource Management objectives
- Consistency with current County Parks practices/direction



Alternatives Evaluation

Criteria that did not differentiate between alternatives

	Alt. 1	Alt. 2	Alt. 3
Consistent with County General Plan	✓	✓	✓
Consistent with Countywide Trails Master Plan	✓	✓	✓
Consistent with Draft Santa Clara Valley Habitat Plan	✓	✓	✓
Consistent with Partner Agency objectives	✓	✓	✓
Adequate staging & facilities	✓	✓	✓
Emergency access and safety	✓	✓	✓
Long-term operations	✓	✓	✓

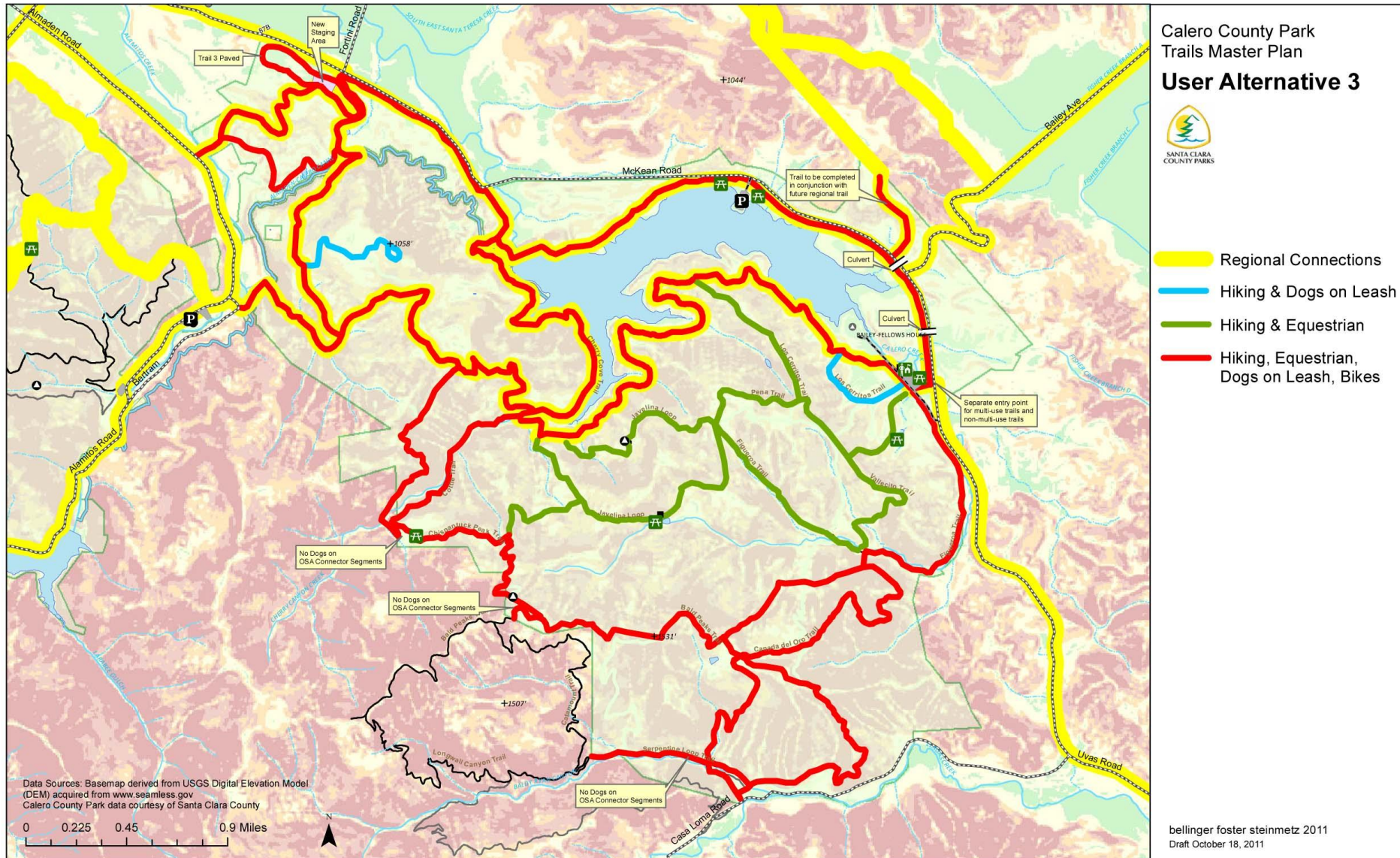
Alternatives Evaluation

Criteria that did differentiate between alternatives

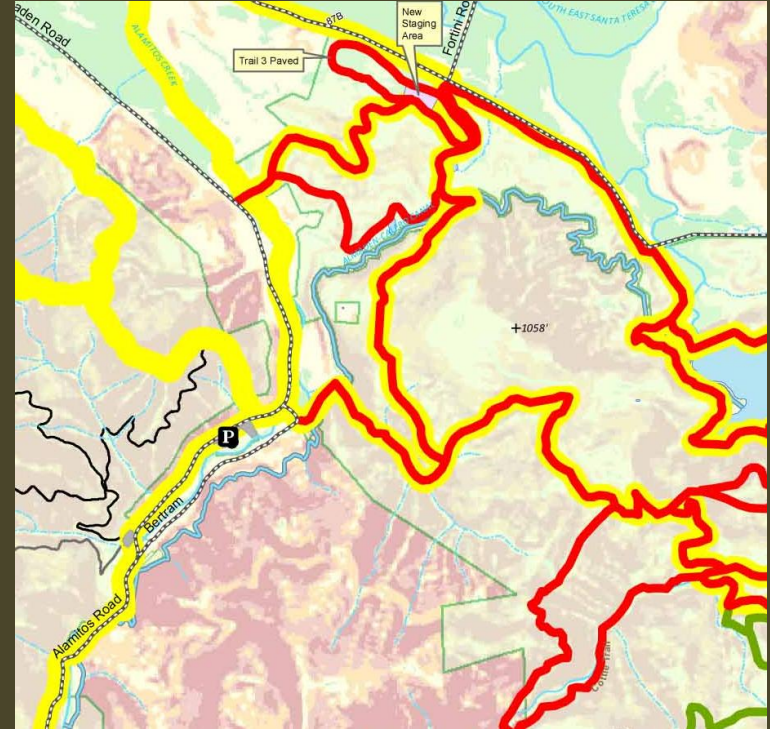
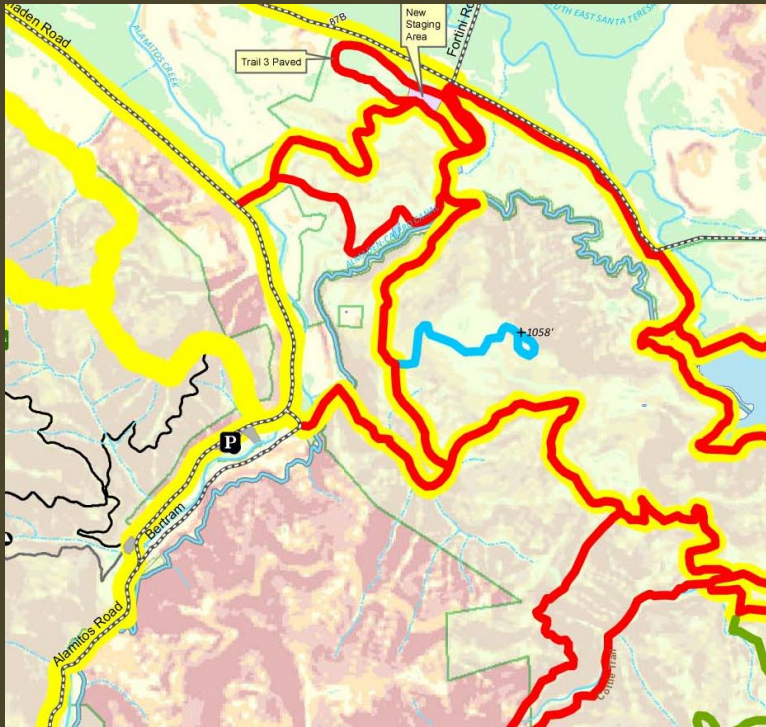
	Alt. 1	Alt. 2	Alt. 3
Consistent with Strategic Plan: “Identify opportunities to increase multiple-use trails”	–	✓	✓
Consistent with current County Parks practices/direction in implementing multiple-use trails	–	–	✓

Revisions to Alternative 3

Based on continued evaluation by the Project Team

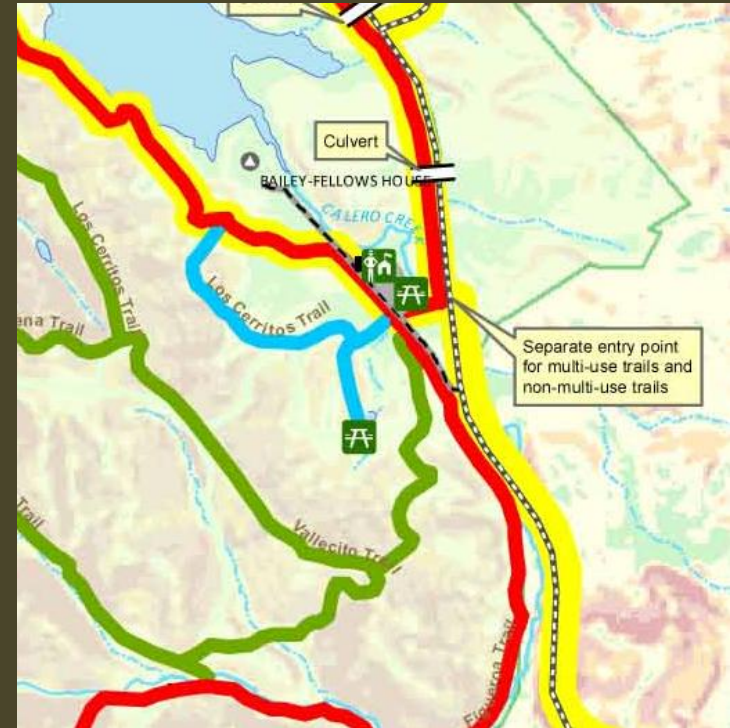


Revisions to Alternative 3



Revised Draft

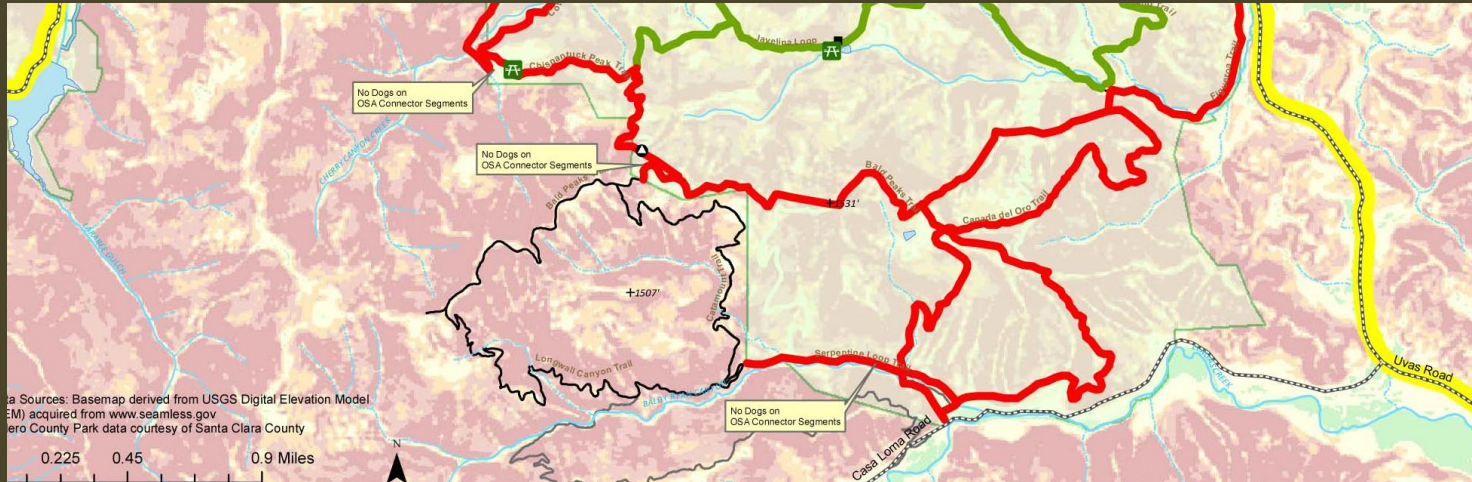
Revisions to Alternative 3



Revised Draft

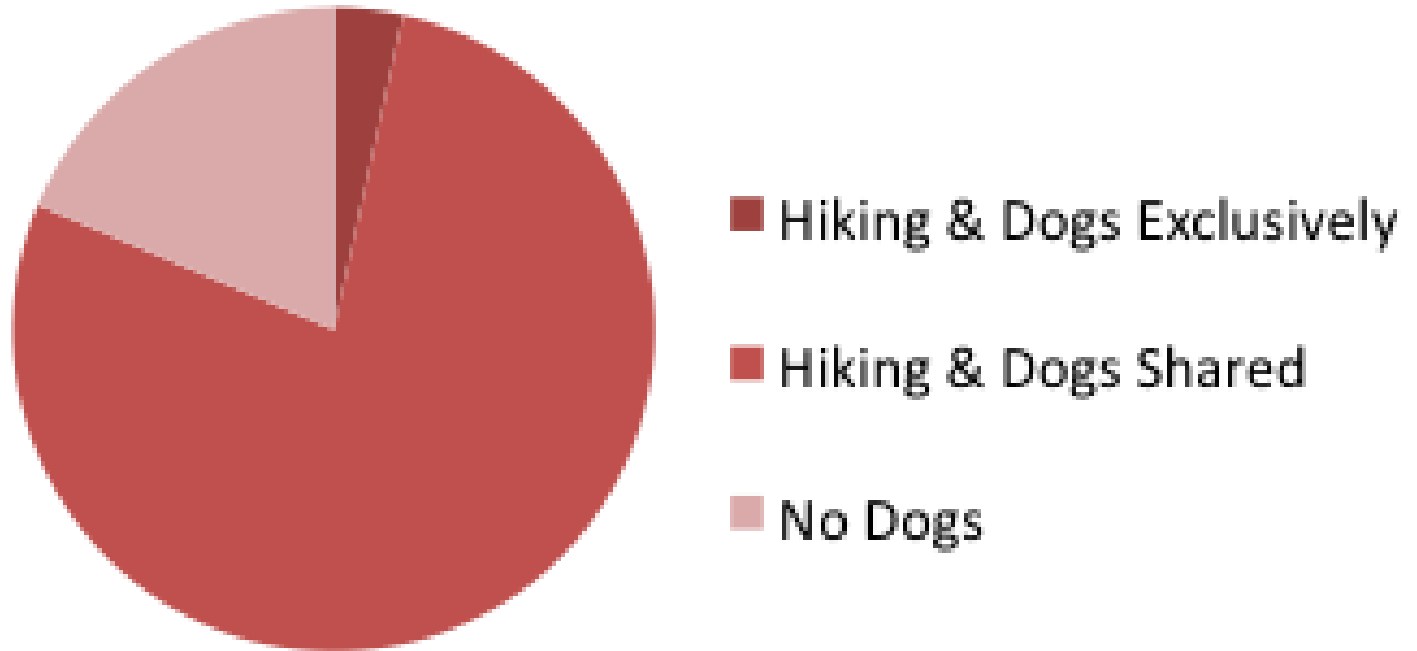
Revisions to Alternative 3

Revised Draft



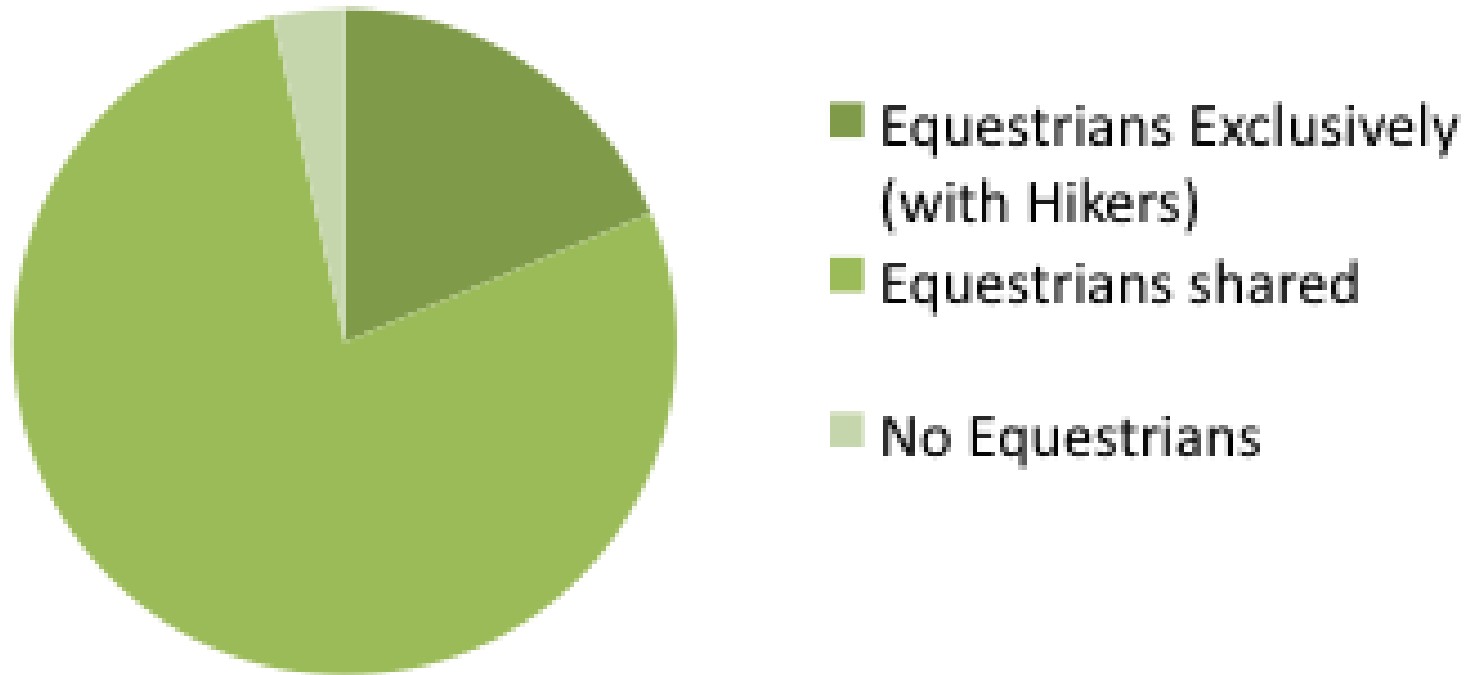
Alternative 3 Trail Use Distribution

Hiking & Dogs



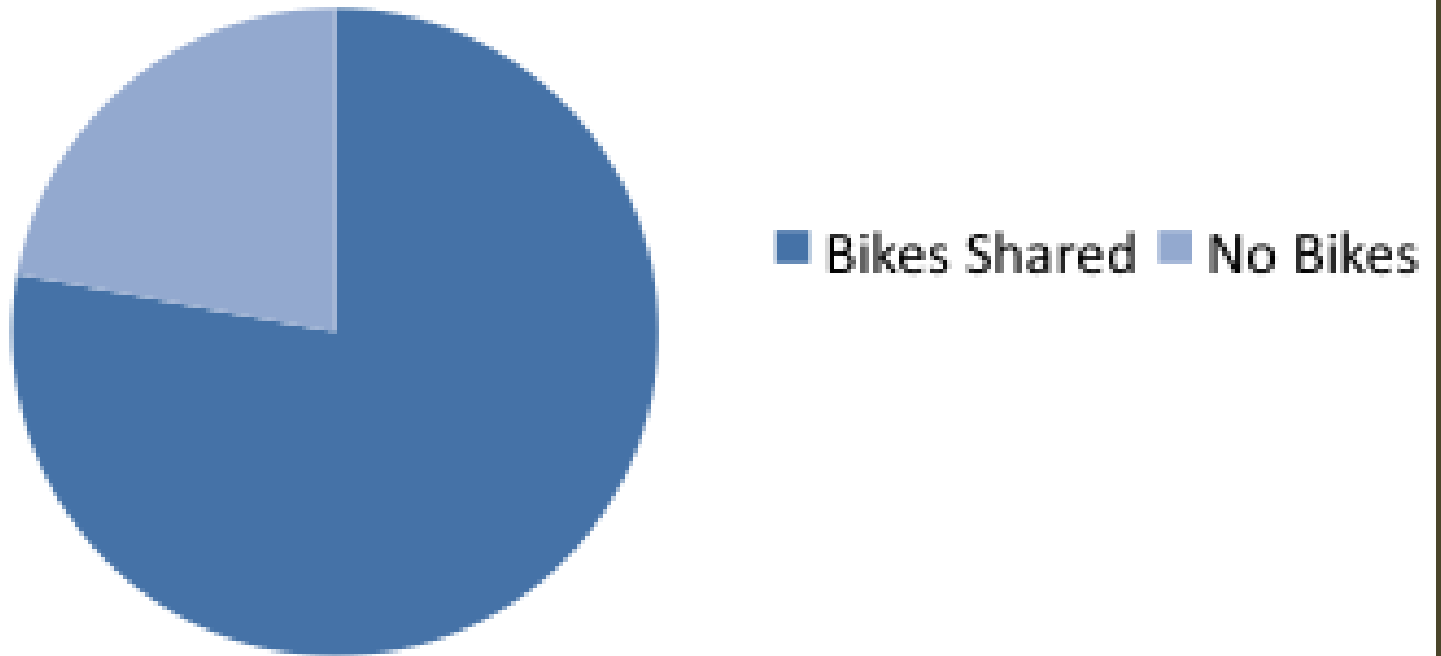
Alternative 3 Trail Use Distribution

Equestrians



Alternative 3 Trail Use Distribution

Bikes



Alternatives Evaluation

Secondary Evaluation: Does Alt. 3 achieve the “wants” list?

<i>Description</i>	<i>Draft Preferred Alternative</i>
<i>Everyone wants:</i> <ul style="list-style-type: none">• Variety in trail experience and ability level• Protection of sensitive resources• Long-term success!	✓
<i>Equestrians want:</i> <ul style="list-style-type: none">• A “safe” place to ride without always considering potential conflicts with bicyclists	✓
<i>Bicyclists want:</i> <ul style="list-style-type: none">• Access to trails, and the ability to connect between parks	✓
<i>Runners want:</i> <ul style="list-style-type: none">• Access to trails, and connections between parks for long-distance runs	✓
<i>Hikers want:</i> <ul style="list-style-type: none">• Access to trails	✓

Alternatives Evaluation

Secondary Evaluation: Does Alt. 3 achieve the “wants” list?

<i>Description</i>	<i>Draft Preferred Alternative</i>
<i>Dog owners want:</i> <ul style="list-style-type: none">• Access to trails	✓
<i>County Parks wants:</i> <ul style="list-style-type: none">• Completion of multi-use regional trail segments identified in the Countywide Trails Master Plan Update• Consistency/collaboration with adjacent open space uses and partner agencies• Compatibility with natural resource management• Ability to sensibly enforce solutions• Ability for long-term sustainability• Flexibility to adapt to changing conditions	✓
<i>Partner agencies want:</i> <ul style="list-style-type: none">• Consistency with plans and policies• Minimal conflicts with operations• Consistency with adjacent open space uses	✓

Planning for Safety = Trail Success

Advancing Best Practices

- Applying Lessons Learned
- Trail Design Standards
- Mapping and Communication
- Collaboration and Education



Planning for Safety = Trail Success

Trail Design Standards

- Coordinate trail plan and profile with topography and vegetation
- Water bars reduce erosion and slow down bicyclists
- Minimize “spur” trails that change use
- Staging area differentiation for users at trail access points
- Clear and consistent signage
- Right-angle trail intersections where feasible

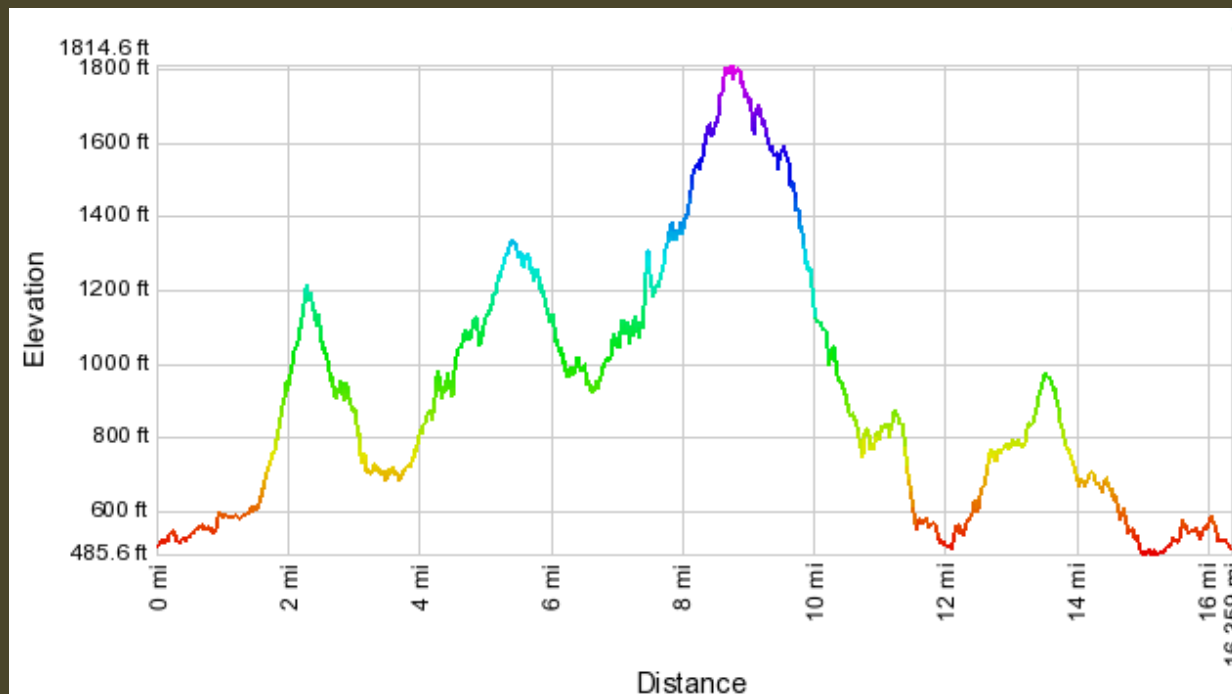


Calero County Park Trails Master Plan

Planning for Safety = Trail Success

Trail Maps and Communication

- Show trail characteristics on maps, such as permitted uses, trail width, surface, profile, etc.
- Let users select trails based on ability and preferences.
- Incorporate technology (smart phone apps)



Courtesy Troy's California Trail Runs

Planning for Safety = Trail Success

Collaboration and Education

- Encourage equestrian, bicyclist and other groups to sponsor trainings on trail safety and etiquette.
- Incorporate volunteer programs (Docents, Trail Watch) to enhance education and patrol.



Community Meeting Comments

Range of comments from:

“I am impressed with the thoroughness and rigour of the evaluation based on clearly stated goals taking into account established principles and user-population trends...”



Community Meeting Comments

to:

“Alternative 3 should go in the shredder!”



Community Meeting Comments

Concerns and Suggestions

- Safety
- Separate bicycle and equestrian trails
- Have alternate use days
- Can equestrian trail mileage (w/o bikes) be increased?
- There should be an Alternative that is all multi-use



Conclusions

- Much of the user experience is based on Almaden Quicksilver.
- Other County Parks (Coyote Lake/Harvey Bear) are perhaps better models.
- Multi-use trails planning and design has evolved.
- Multi-use experience of other agencies (OSA, Mid-Pen, Bay Area Ridge Trail) has not resulted in conflict.
- With proper planning, design, implementation and policies, multi-use has been successful.
- Young and inexperienced equestrians need to be accommodated.

Next Steps

- Completion of Alternatives Report
- Next Phase of Project: Final Master Plan



Alternatives Report

- Compilation of work since completion of Program Development Report



Final Master Plan

- Continued refinement of preferred alternative
- Design standards
- Policies
- Phasing
- CEQA analysis



Ongoing Process

- Continued collaboration with partner agencies
- Additional field verification/alignment refinements
- PRC guidance



Calero County Park Trails Master Plan

Parks and Recreation Commission

November 2, 2011

